

CERTIFICATE OF LOCATION OF GOVERNMENT CORNER

NORTHEAST Corner of Section 31, Township 105, Range 41, 5TH P.M.

STATE OF MINNESOTA, County of MURRAY

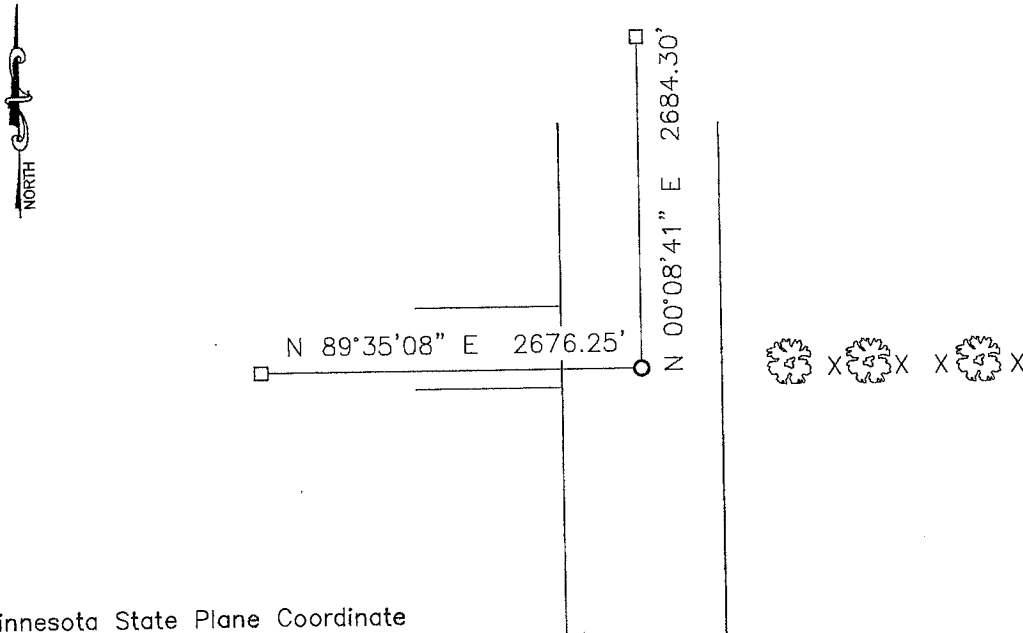
At the corner location shown on the sketch:

On 04-20-2012 found a large field stone.
DATE

left monument as found, lowered monument, removed monument (explain)

On 04-20-2012 placed a 5/8" iron with seal #43844 on the east side of the stone
DATE and a 1" pipe with seal #43844 over the stone.

SKETCH OF REFERENCE TIES



Minnesota State Plane Coordinate
System Murray County Datum
NAD83 (1996)

N: 105427.918
E: 490235.554

Statement of evidence relative to this corner location is on back of page.

I hereby certify that this document and the data contained herein was prepared by me or under my direct supervision.

James V. Johnson 2/21/13
SIGNATURE DATE

Registration No. 43844

Land Surveyor, Professional Engineer
 County Surveyor, County Engineer

OFFICE OF THE COUNTY RECORDER
County of

I hereby certify that this document was filed in the Co. Recorders office at _____ .M on the MAY 23 2013 day of _____ A.D. 20 _____

County Recorder *James V. Johnson*
By _____, Deputy

DOCUMENT NO. _____

Statement of Evidence

In 1861, Wellman and Smoot did the original subdivision of the township.

On June 1, 1971, the Murray County Highway Department found a stone at the corner. They set a railroad spike over the stone.

On April 20, 2012, Bueltel-Moseng Land Surveying dug with a backhoe and found a large field stone. We set a $\frac{5}{8}$ " iron with seal #43844 on the east side of the stone and a 1" pipe with seal #43844 over it.